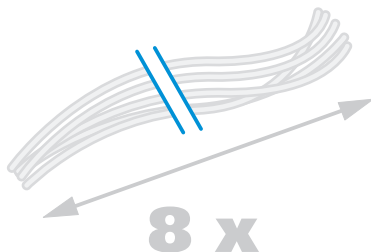
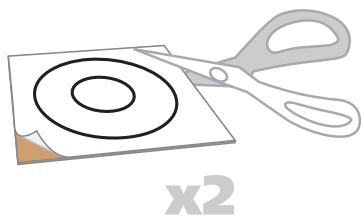




Ladybird

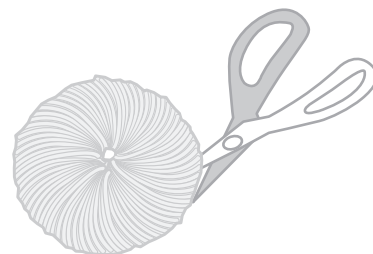
Funky pompom



1. PRINT OUT THE TEMPLATE SHEET. GLUE THE DISC GUIDES TO A THIN PIECE OF CARD AND CUT OUT TWO DISCS

2. PREPARE THE WOOL BY DOUBLING IT UP SO THAT YOU HAVE PIECES ABOUT 2m LONG IN BUNDLES OF ABOUT 6 TO 10 STRANDS, DEPENDING ON HOW THICK THE WOOL IS. YOU MAY NEED 3 OR 4 SUCH BUNDLES

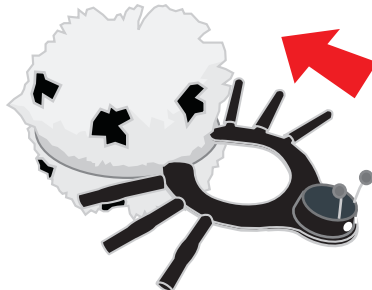
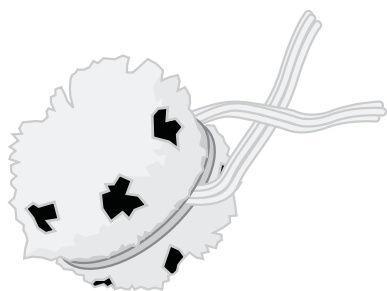
3. STARTING WITH THE BODY COLOUR, PASS THE WOOL THROUGH THE HOLE IN THE MIDDLE OF THE DISC REPEATEDLY SO THAT YOU WIND IT ROUND THE DISC, UNTIL YOU HAVE JUST COVERED THE DISC



4. TO MAKE THE SPOTS WIND THE SPOT COLOUR WOOL BUNDLE ONLY TWICE THROUGH IN ONE PLACE, AND THEN, LEAVING A GAP, DO THE SAME AT ANOTHER SPOT ON THE RING, SPACE 4 OR 5 OF THESE BUNDLE WRAPPINGS EVENLY ROUND THE DISC.

5. WHEN YOU HAVE DONE THIS, CUT OFF THE REMAINING CONTRASTING COLOUR BUNDLE AND START A NEW BUNDLE OF THE ORIGINAL BODY COLOUR. WRAP THIS ROUND SO THAT IT COVERS UP THE SPACED OUT BUNDLES COMPLETELY CARRY ON WITH THIS COLOUR UNTIL NO MORE WOOL WILL PASS THROUGH THE MIDDLE OF THE DISC.

6. USING STRONG SCISSORS, PUSH ONE BLADE OF THE SCISSORS INTO THE WOOL AND BETWEEN THE TWO CARD DISCS AND CUT THE WOOL ROUND THE RIM



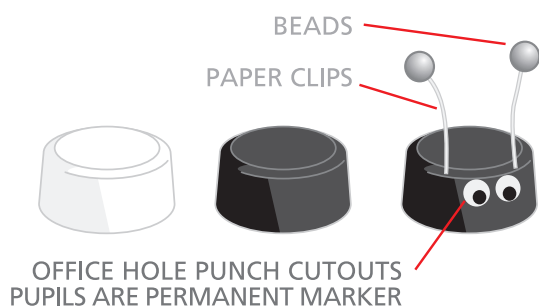
7. PASS SEVERAL SHORT STRANDS OF THE WOOL BETWEEN THE DISCS AND TIE TIGHTLY ROUND THE BUNDLE AND CUT OFF BELOW THE ENDS OF THE POMPOM

8. MAKE THE BODY LEG ASSEMBLY FOLLOWING THE INSTRUCTIONS ON THE LADYBIRD TEMPLATE SHEET. THEN PUSH ONLY ONE OF THE DISCS OFF THE BUNDLE AND SLIDE IN THE BODY LEG ASSEMBLY OVER THE REMAINING DISC. WHEN LEGS ARE IN PLACE, REMOVE THE OTHER DISC

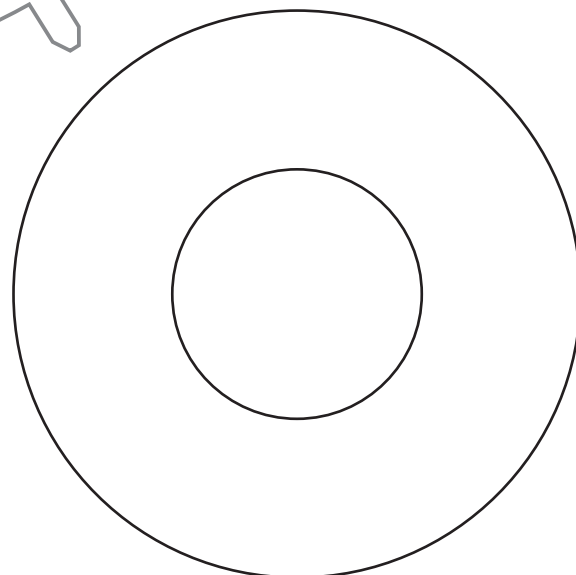
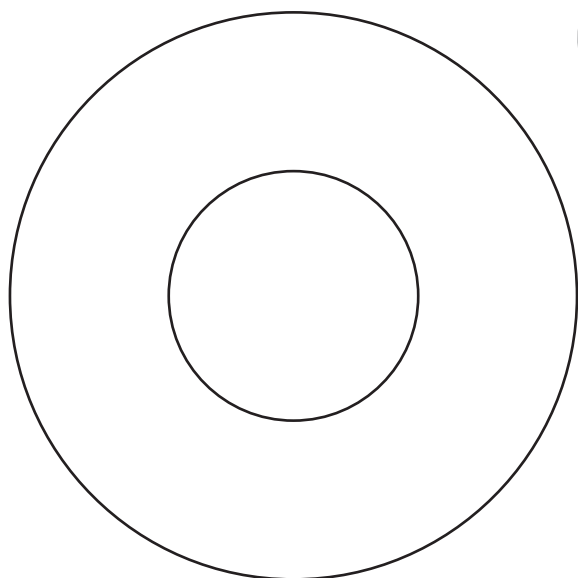
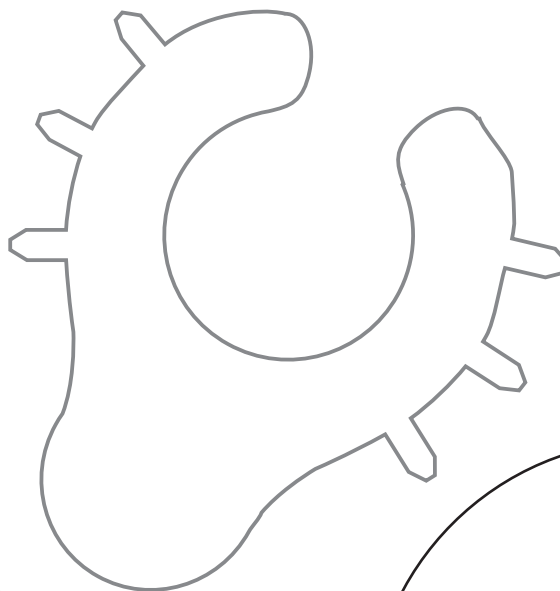
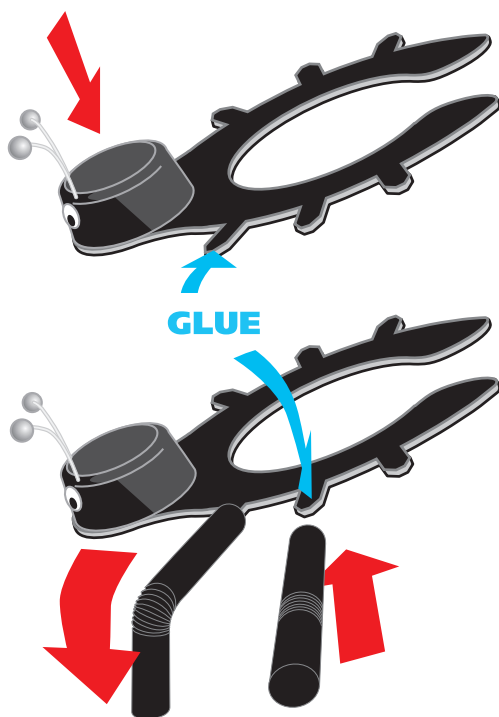
9. BEND THE LEGS ROUND SO THAT YOUR LADYBIRD STANDS STRAIGHT

10. TRIM BACK VERY HARD, TO GET THE RIGHT SHAPE, ESPECIALLY UNDERNEATH

TEMPLATE SHEET



1. PRINT OUT THIS SHEET
2. ROUGHLY CUT OUT THE BODY LEG FRAME AND THE DISCS AND GLUE TO A PIECE OF STIFF CARD OR SHEET OF PLASTIC (e.g. THE FLAT SIDE DETERGENT CONTAINER BOTTLE)
3. USING STRONG SCISSORS, CAREFULLY CUT OUT THE BODY LEG FRAME AND DISCS
4. COLOUR THE BODY FRAME WITH BLACK MARKER, MAKING SURE TO MARKER ALONG THE CUT EDGES, SO THAT IT IS ALL BLACK
5. SPRAY OR MARKER A SMALL DRINK BOTTLE CAP, BLACK
6. STRAIGHTEN TWO PAPER CLIPS AND POKE THROUGH CAP TOP AND GLUE INSIDE CAP. GLUE BEADS ON THE ENDS OF THE PAPER CLIPS
7. USE AN OFFICE HOLE PUNCH TO CUT SOME THIN CARD OR DETERGENT BOTTLE PLASTIC FOR THE EYES AND GLUE IN PLACE
8. CUT 8 BENDY DRINKING STRAWS TO ABOUT 70mm LONG SO THAT THE BENDY BIT IS IN THE MIDDLE (USE DARK OR BLACK ONES IF YOU HAVE THEM)
9. ONE BY ONE, APPLY GLUE TO THE TABS ON THE BODY LEG FRAME AND PUSH A STRAW ON EACH TAB, MAKING SURE THAT THEY ARE HORIZONTAL WITH THE FRAME
10. PUSH ONTO BODY AS DESCRIBED ON THE FLUFFY LADYBIRD MAKING SHEET AND THEN BEND DOWN THE LEGS, ADJUSTING THE BENDS, SO THAT THE LADYBIRD STANDS LEVEL



DISC TEMPLATES